

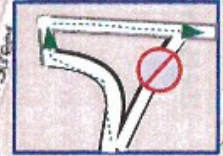


5K LAUREL, MARYLAND

39°06'17.76"N, 76°51'25.26"W



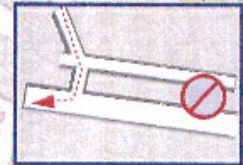
START/FINISH INSET



Mile 1 – on Park Ave, 10' 5" North of Pole # 812504 on West side, marked with PK nail

Mile 2- On the River Walk Trail, 76' 5" North West of the manhole cover set on the concrete pad on the South side of the trail. Marked with PK nail

Mile 3- on Park Ave, 50' 1" West of hydrant closest to Eighth St. intersection on South side, marked with PK nail



START on Eighth Street heading South, even with Pole # 334087 on the West side and 51' 1 1/2" from the Laurel Ave/ Eighth st, Street Sign on the East side

FINISH – on Eight Street, approaching from the North, even with corner fence post leading to McCullough Field Parking area on West side and 32' 3" South of hydrant on West side

 **bluecheetah**
sports timing
Measured by:
Nathan Porch

